

CHURCH OF ST. ALBERT THE GREAT

DEARBORN, MICHIGAN

Father Leo J. De Plaunty
Pastor

Sacrifice is Love

OUR CHALLENGE

This booklet has been prepared to give you the complete story of the fulfillment of a dream. Our cherished dream of a new house for our Lord is about to come true. As our dream materializes in the form of brick and mortar our thoughts must turn to the means of completing God's house. We know that God will do His part—our part will consist of **WORK, PRAYER and SACRIFICE.**

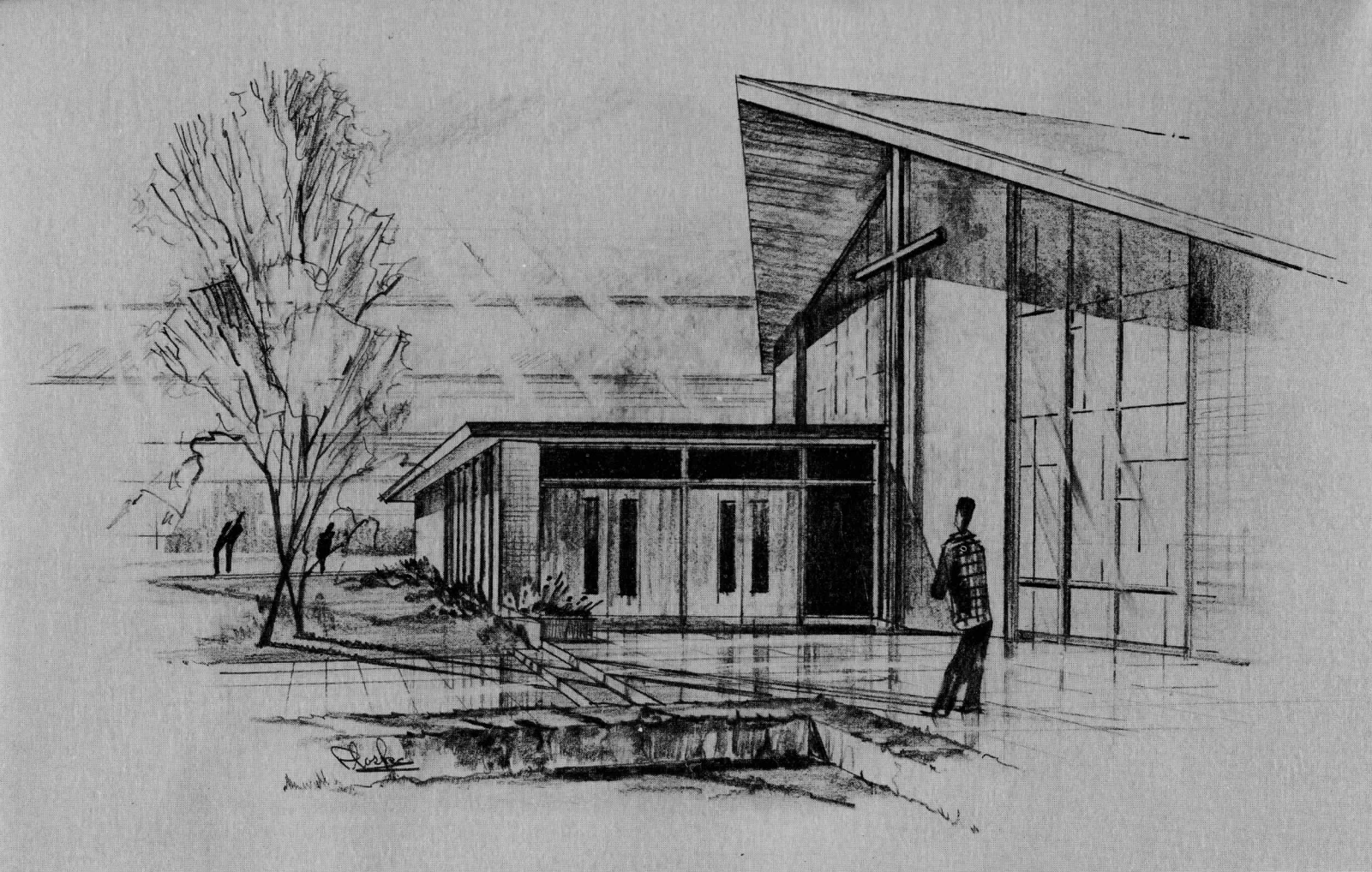
The immediate need in achieving success in our undertaking is to put our parish on a sound financial basis. Our parish debt is \$249,000. This obligation has been incurred to pay for the land, the rectory, architect's fee and the church and its furnishings. Our present income is insufficient to amortize this debt, pay our normal operating expenses and properly equip and furnish our beautiful new church. Without a positive, well-organized program to finance our immediate and future needs our building program will be in serious jeopardy.

To fulfill our immediate needs in putting the parish on a sound financial basis a minimum of \$100,000 is needed. A Building Fund Campaign was selected as the most feasible procedure for achieving our \$100,000 minimum goal. A two year payment plan has been devised to allow all wage-earning parishioners to participate in this opportunity to express gratitude to God for our many blessings.

The success of our future growth and development will hinge upon the spirit of sacrifice shown by each parishioner during the campaign. Each generation must leave its memorial to its children and its children's children. Ours is the opportunity to leave as our memorial this most precious monument—a house for the Lord.

A HOUSE FOR OUR LORD

The proud pages that follow present the Church which St. Albert the Great Parish is building. Here, in picture and in word, is the complete presentation of the new dwelling place of Our Blessed Savior . . . the new church home for all of us and our children and our children's children.



ENTRANCE
TO THE
NARTHEX



CHURCH

OUR CHURCH

To have a part in the building of a church is a privilege. Every offering, every gift, will be an expression of love of God. In the parish, so far, our Blessed Savior has been content to live in temporary quarters. Always he has looked forward to the day when His people will give Him a house. He wants it to be their gift to Him. There He will dwell, from there He will go out to the sick and dying, there He will be worshipped in the Sacred Liturgy, there He will bestow His sacramental graces, there He will welcome the troubled soul and give sweet consolation, there he will teach, there He will wait and wait. What a privilege it is for a people to give Him a house among their homes!

OUR NEEDS

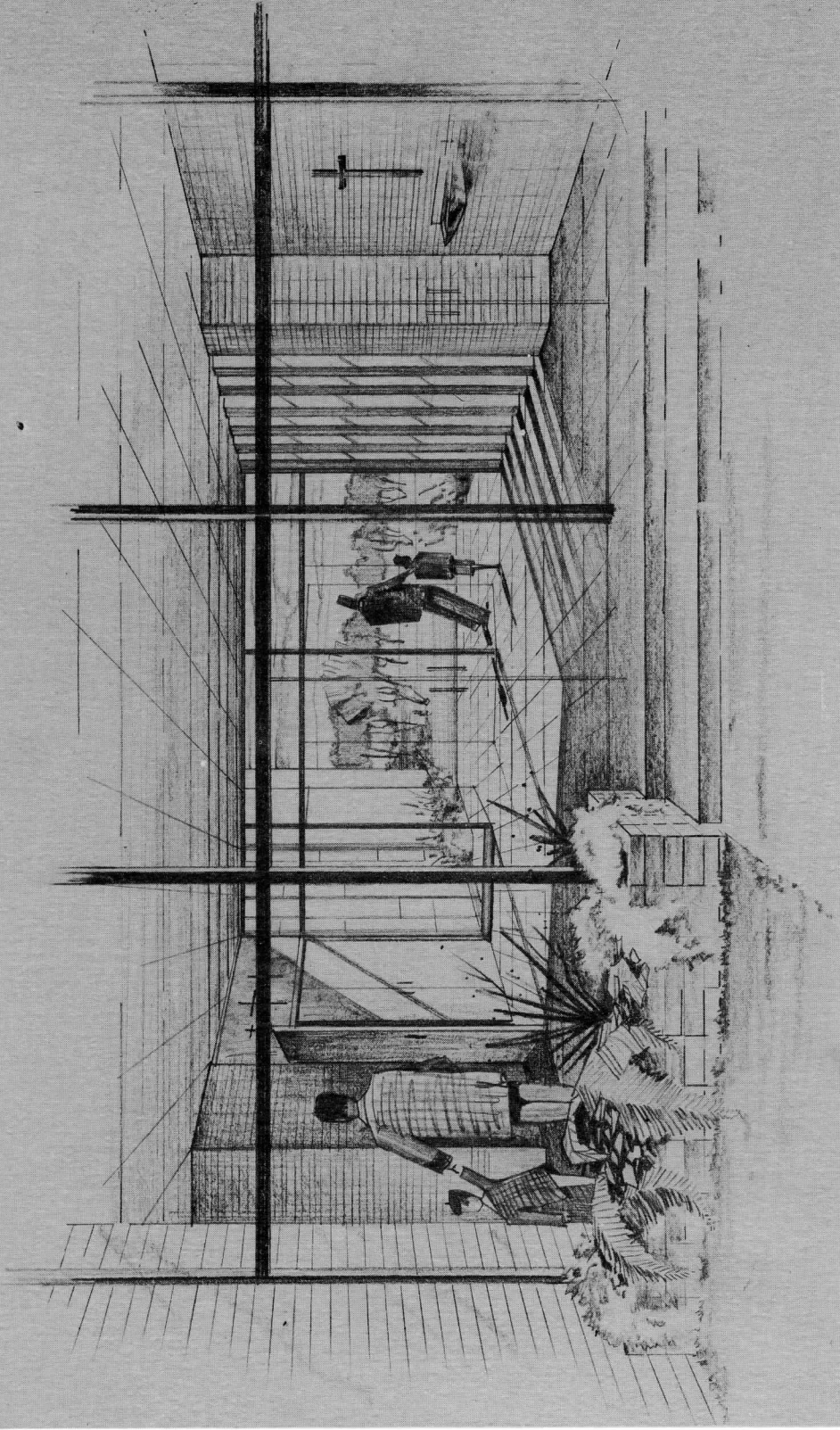
We have adequate land to meet the challenges of the future. We have our rectory. Our Church will seat 1,000 comfortably.

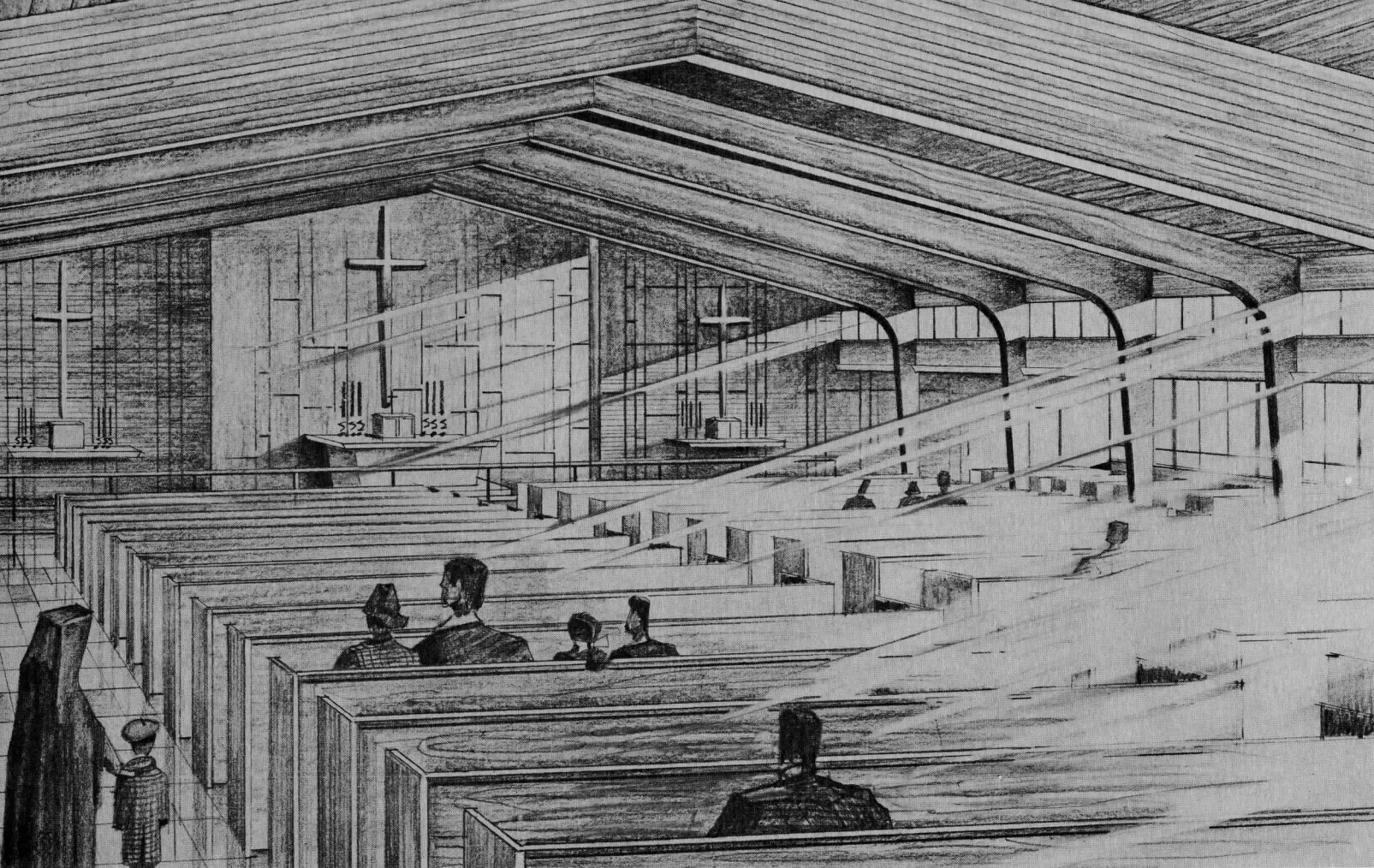
We must now furnish the Church with the necessary religious articles and equipment. We have in effect now, a shell of a building.

Our indebtedness will be approximately \$249,000 when we begin celebrating Mass in our new Church. We must prepare to amortize the principle and interest on our indebtedness.

We can accommodate 4 classrooms for our children in our Church building. We must plan now to have adequate furnishings and facilities for the children as soon as the nuns become available.

NARTHEX





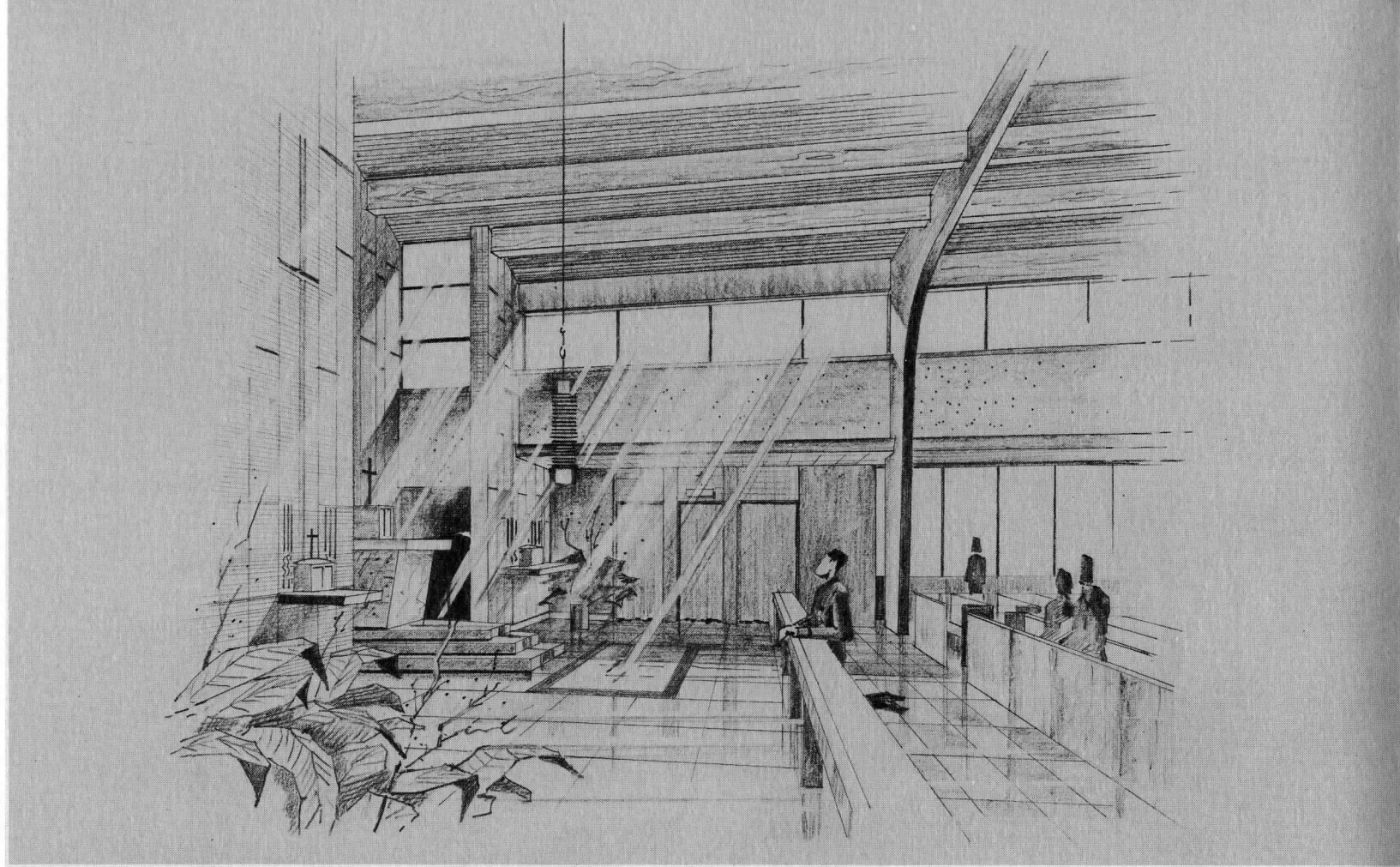
**VIEW
TOWARD
SANCTUARY**

OUR IMMEDIATE GOAL

The all-important point at the time of this report is the consideration of immediate available cash or pledges which we need to put the parish on a sound financial basis. The amount of our minimum need for the next two years is \$100,000.

So at this critical time, as always, we simply present the facts, and ask only that each parishioner weigh them prayerfully, and then act according to his own ability and his own desire to serve his God through sacrifice cheerfully.

I have given you the facts about our great new project to the best of my ability. Having done this, I ask only that you study them carefully, and let them help to guide you.



SANCTUARY

OUR PLAN TO MEET THE CHALLENGE

To meet the challenge and to make our plans a reality without an undue and lengthy lapse of time, it has become necessary for us to take positive action embodying the soundest business principles and procedures. With all of the facts before you, I am sure you are willing to rise up to meet the challenge of your own moral, personal and financial participation in a program to meet our needs. After due consideration of the various possible courses of action, it was decided that an intensive memorial building fund campaign was the answer to the problem of putting our parish on a sound financial basis.

We have received the concurrence of His Eminence, Edward Cardinal Mooney to conduct this campaign. Our minimum goal of \$100,000 payable in subscriptions over a 24-month period, will allow us to have use of the facilities in our beautiful parish Church and put us in an intelligent position to meet the future.

YOUR FAIR SHARE

In order to meet our obligations intelligently and insure the success of our growth and development, this campaign will require sacrifices motivated by love and cheerful teamwork of all our parishioners.

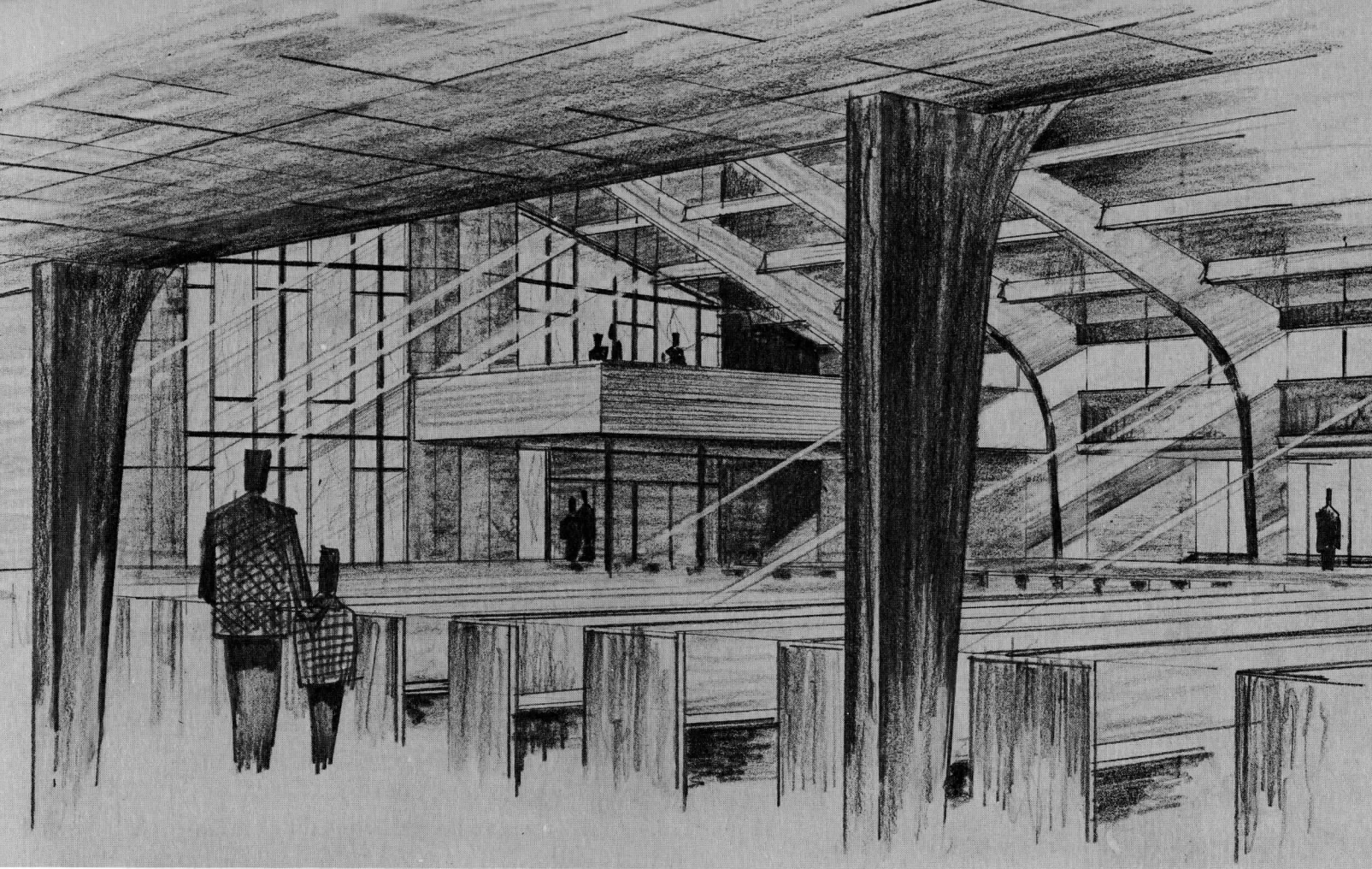
A “Memorial Gift” plan and a “Fair Share” plan—within the reach of every wage-earning adult in the parish—will be our campaign plan. Let your “sacrifice” to St. Albert’s be an expression and open manifestation of your love for Almighty God.

MEMORIALIZE YOUR GIFT TO GOD

Many of you have been blessed by Almighty God with a more generous share of material goods than others. It is only fitting that people in these fortunate circumstances be provided an opportunity to give more generously as recompense for their extraordinary blessings.

The new Church of St. Albert the Great has provided excellent memorial opportunities for you and your family. Designating memorial whether it be by individuals, families, organizations and parish societies to honor and perpetuate the names of loved ones, living or deceased, or for a special intention is a gift of sacrifice and pleasing to Almighty God.

An attractive plaque bearing the names of Memorial Gift Donors and the gift they designated will be permanently attached to a prominent place in the Church.



NAVE
TOWARD
BALCONY

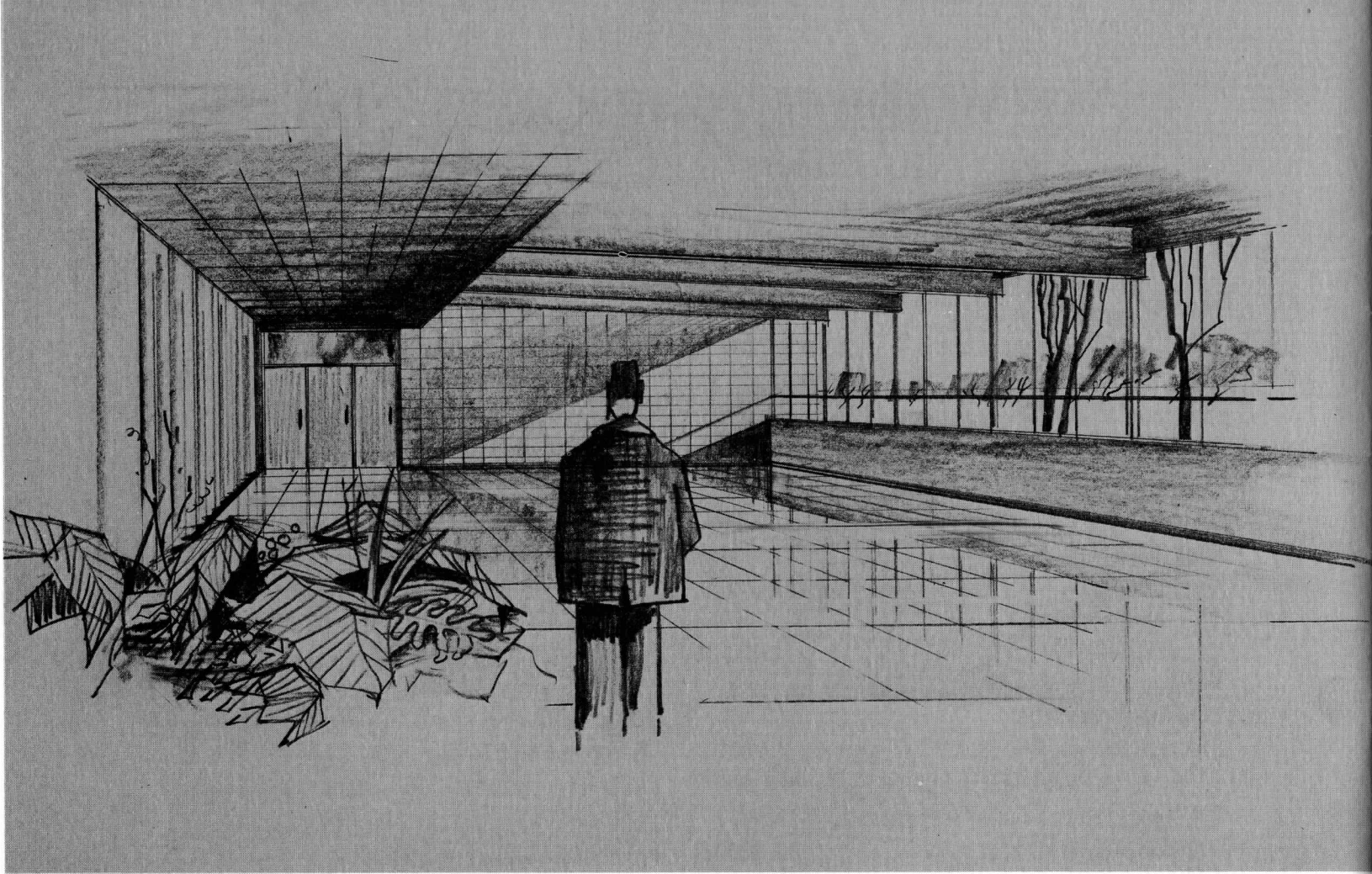
MEMORIAL OPPORTUNITIES

Main Altar	\$6,000	Sanctuary Lamp	1,000
Side Altar—Sacred Heart	2,500	Sacrarium	500
Side Altar—Holy Family	2,500	Sidewalks to Church Door	600
Tabernacle—Main Altar	1,500	Parish Seal	500
Choir Loft	2,000	Credence Table	500
Communion Rail	1,200	Sedilia	525
Organ	5,000	Ambry for Holy Oils	500
Outdoor Cross	1,200	Holy Water Fonts (5)	500
Outdoor Lettering	750	6 pair Candle Sticks pair	500
Sanctuary	2,000	6 pair Candelabra pair	500
Baptistry	1,000	Censer and Boat	500
Public Address System	750	Processional Cross	650
Priest's Sacristy		Holy Water Receptacle	500
Patron	750	Aspersorium	525
Statue	525	Main Altar Cards and Frames	650
Crucifix	500	Side Altar Cards and Frames each	500
Chimes for Main Altar	750	Church Interior Decoration	1,200
Wood Carving, Holy Family—Altar	750	Monstrance	1,000
Wood Carving, Sacred Heart—Altar	750	Eight Prie Dieux each	500
Statue of St. Albert	750	Two Votive Light Stands each	500
Statue—Infant of Prague	750	Altar Missal, Main Altar	650
Pulpit	1,000	Altar Missal, Side Altars (2) each	500
Four Communion Patens each	500	Lunala	525
Confessionals, Three each	825	Sacristy Bells	500
Crucifix—Holy Family Altar	550	6 pair Processional Candle Sticks pair	500
Crucifix—Sacred Heart Altar	550	Church Pamphlet Rack	500
Crucifix—Main Altar	1,000	Sick Call Pyx	500
Stations of the Cross each	625		

MEMORIAL OPPORTUNITIES

Church Bulletin Board	500	Benediction Burse	500
Baptistry Case	500	Altar Candle Lighter	500
Ten Church Windows each	525	Ablution Cup	500
Church Front Windows	1,000	Baptismal Shell	500
Catafalque Cover	1,000	Wedding Prie Dieux	525
Altar Boys' Sacristy		Statue of Resurrection	500
Patron	750	Holy Week Clapper	500
Statue	525	Communion Rail Cloth (3) each	500
Crucifix	500	Cruets and Tray	500
Three Chalices each	750	Benediction Stole	500
Confessional Stole (3) each	500	Holy Oil Stocks	525
Choir Hymnals	500	Papal and American Flag	500
Processional Canopy	1,500	Church Clock	500
Church Vestibule	3,500	Tabernacle Veils (complete)	600
Baptismal Font	1,500	Pascal Candle Stand	500
Heating Plant	2,500	10 pair Bronze Vases—Main Altar . . pair	525
Safe for Sacred Vessels	600	Vestments—(Gothic)	
15 Boys' Cassocks and Surplices (grade)	600	Gold	600
15 Boys' Cassocks and Surplices		Red	500
(elementary)	600	White	500
Church Doors, (3)	550	Green	500
Carpeting, Main Altar	500	Violet	500
Funeral Candlesticks and Crucifix	1,500	Black	500
2 Complete Manger Scenes each	500	Rose	500
Ceremonial Cruets—Silver or Gold	650	Repository for Blessed Sacrament	750
Ciborium (4)	550	Vestment Case	500

The subscription for a memorial is not fixed by its actual cost, but is determined in consideration of the privilege of designation and to absorb the cost of building construction which cannot be readily memorialized.



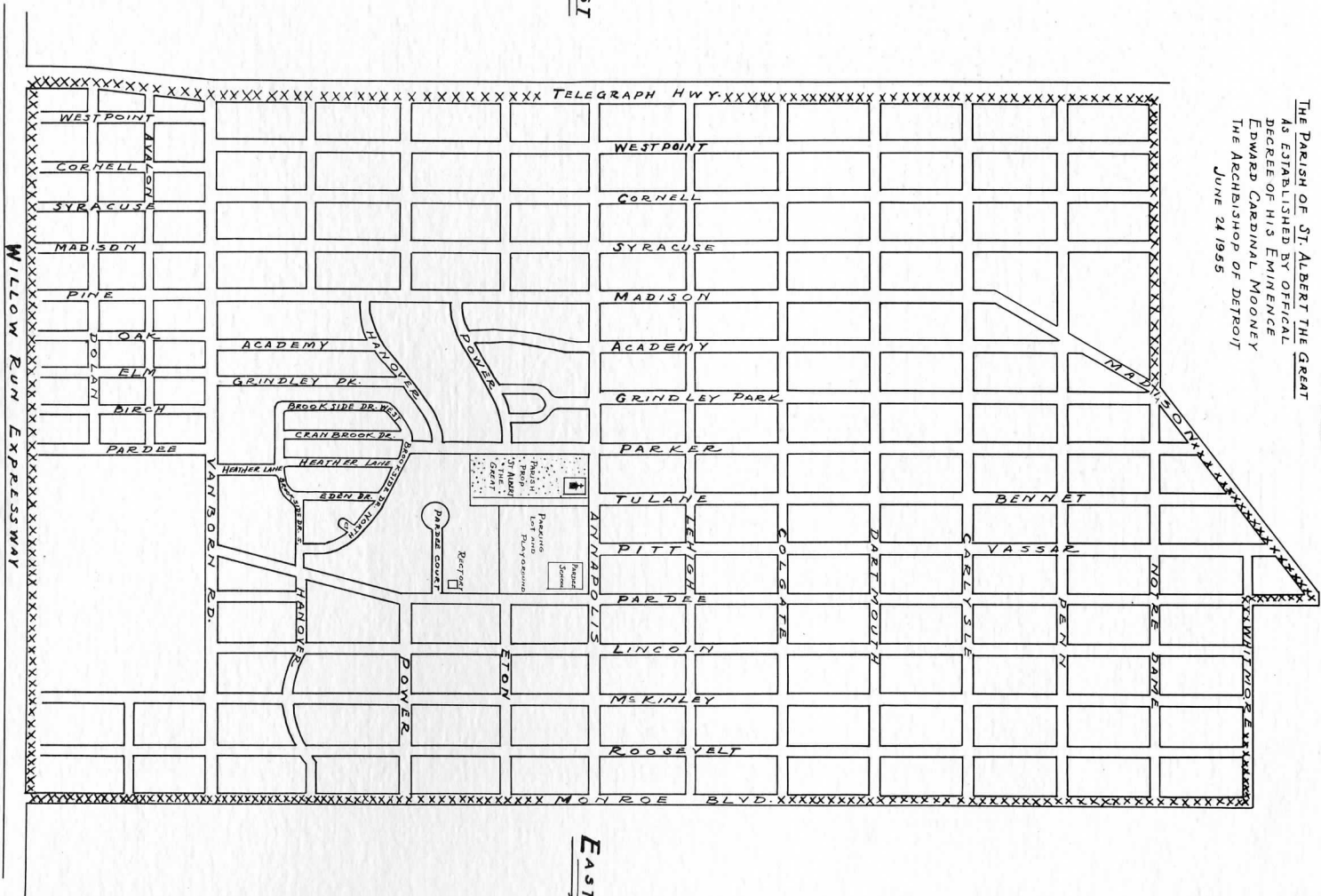
COMMUNITY
HALL

THE PARISH OF ST. ALBERT THE GREAT
 AS ESTABLISHED BY OFFICIAL
 DECREE OF HIS EMINENCE
 EDWARD CARDINAL MOONEY
 THE ARCHBISHOP OF DETROIT
 JUNE 24 1955

North

West

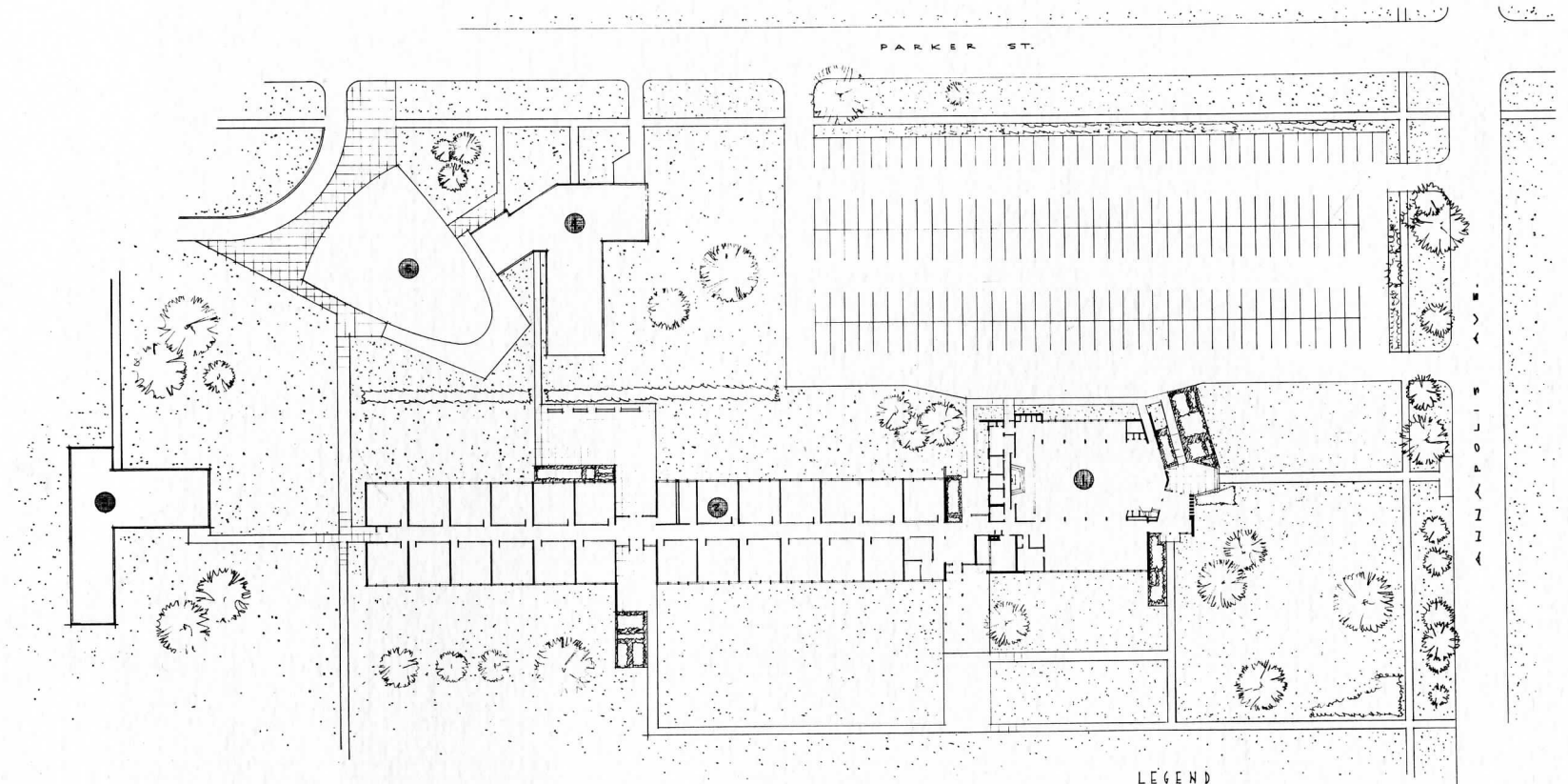
East



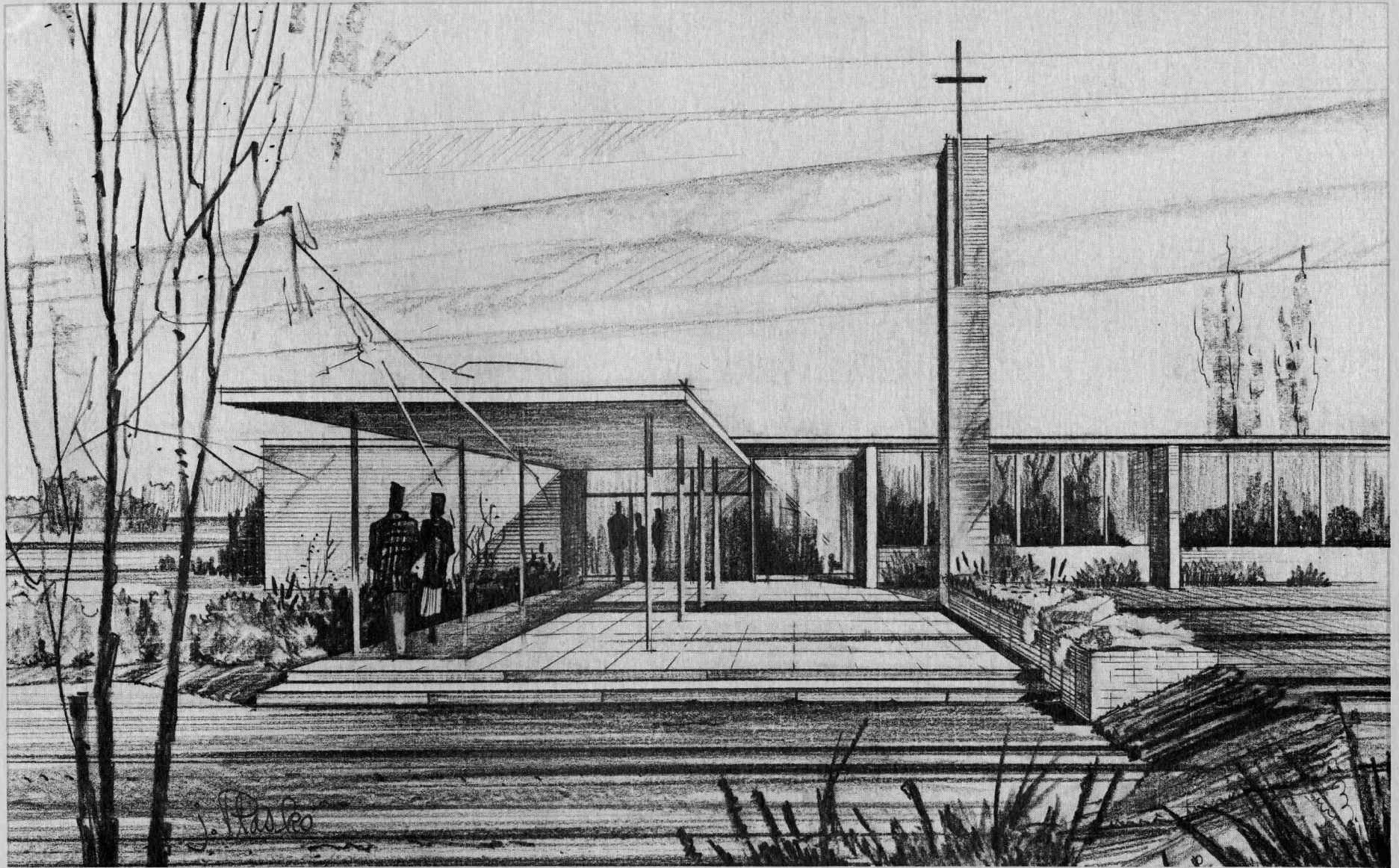
South

BOUNDARIES OF
 ST ALBERT THE GREAT

PARISH BOUNDARIES



SITE PLAN



FUTURE SCHOOL

*When man can do nothing,
God does all;
but when man can do anything,
God requires
he should do it to the utmost.*

I wish to acknowledge and thank Messers Robert L. Svoboda, AIA, our architect, Frank Carcone and Dan Thomas for their combined efforts and for giving freely of their time to make this brochure possible.

